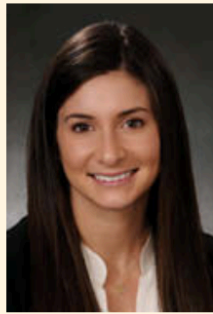




\$2.00 FEB. 12-18, 2015 / 23-29 SHEVAT 5775

## » memos



**Hutton**



**Roth**

Maddin, Hauser, Roth & Heller PC, a Southfield-based law firm, has named **Rachel A. Hutton** and **Jesse L. Roth** as associate attorneys. Hutton is a member of the firm's Corporate and Employment Practice Group, who focuses her practice on corporate, employment and real estate matters. Roth is a member of the firm's Defense and Insurance Coverage Practice Group.