

Maddin Hauser's
Employment Law
Symposium

SEX, DRUGS AND ROCK & ROLL

Ronald A. Sollish, Esq.

 **Maddin Hauser**
Attorneys and Counselors

Maddin, Hauser, Roth & Heller, P.C.

28400 Northwestern Hwy. Southfield, MI 48034

p (248) 354-4030 f (248) 354-1422 maddinhauser.com





Ronald A. Sollish, Esq.

Shareholder

(248) 827-1876

(248) 359-6176 Fax

rsollish@maddinhauser.com



Maddin Hauser
Attorneys and Counselors

Maddin, Hauser, Roth & Heller, P.C.

28400 Northwestern Hwy. Southfield, MI 48034

p (248) 354-4030 f (248) 354-1422 maddinhauser.com



Overview

- Consensual Workplace Relationships
- Challenges of Social Media in the Workplace
- Cannabis in the Workplace

CONSENSUAL WORKPLACE RELATIONSHIPS

- Legal context
 - Not illegal. Can lead to legal issues
 - Unwelcome sexual advances
 - Hostile work environment
 - Quid Pro Quo Harassment
- Effects on workplace
- Managing them
 - Fraternalization policies
- What other companies are doing



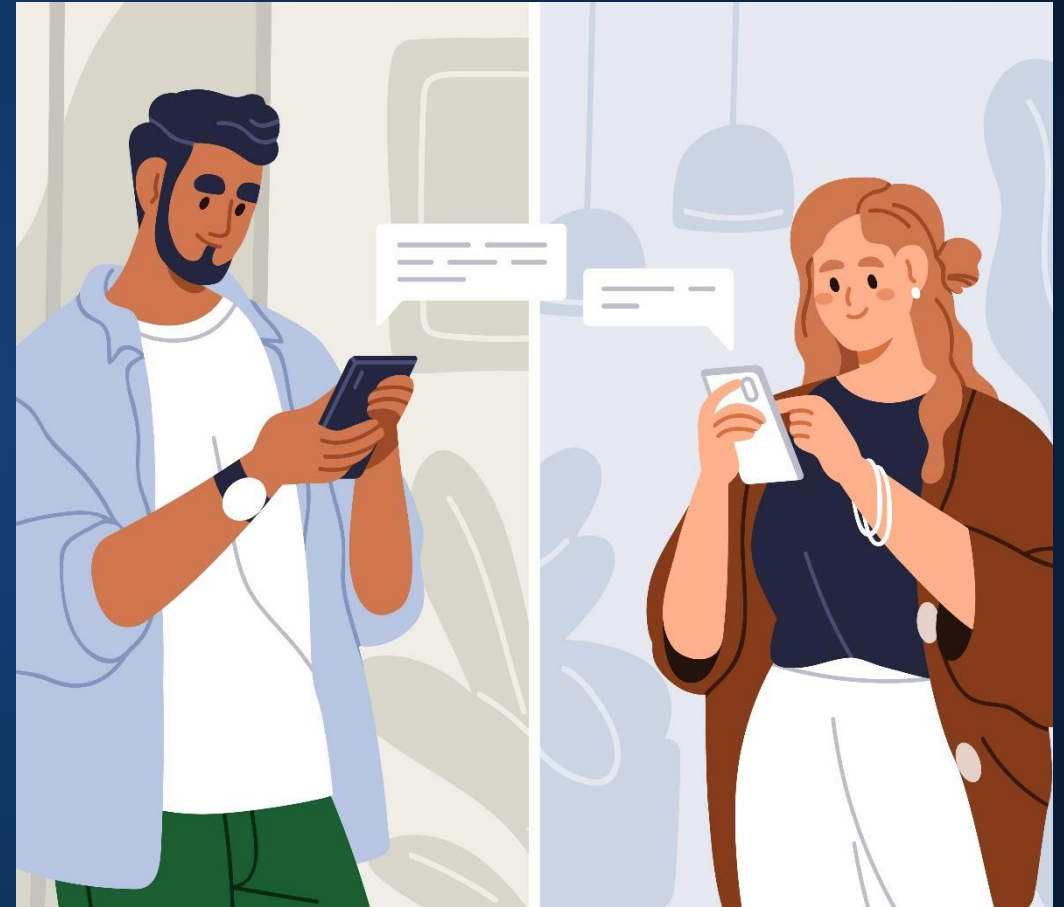
WORKPLACE SOCIAL EVENT

- Work-Sponsored and Work-Related Events
- When Can an Employer be Held Liable for Employee Behavior?
 - “Within the Course and Scope of Employment”
 - Sexual Harassment at Events



CHALLENGES OF SOCIAL MEDIA IN THE WORKPLACE

- Hackers and online scams
- Negative comments about the employer and/or customers
- Complaints about harassing behavior
- Disciplining an employee for social posts
- Managing and monitoring employees
- Reduced employee engagement
- Employee claims for adverse employment actions related to social media posts
 - Discrimination
 - Invasion of privacy
 - Michigan's Internet Privacy Protection Act
 - State laws protecting employee's off duty conduct



CANNABIS IN THE WORKPLACE

- Safety risks
- Decreased productivity
- Litigation
- Increased worker compensation and unemployment compensation claims
- High turnover
- Recommended work policies
- Legal definitions and precedents



Maddin Hauser's
Employment Law
Symposium

THANK YOU



Ronald A. Sollish, Esq.

Shareholder

(248) 827-1876

(248) 359-6176 Fax

rsollish@maddinhauser.com



Maddin Hauser

Attorneys and Counselors

Maddin, Hauser, Roth & Heller, P.C.

28400 Northwestern Hwy. Southfield, MI 48034

p (248) 354-4030 f (248) 354-1422 maddinhauser.com

